

6

5

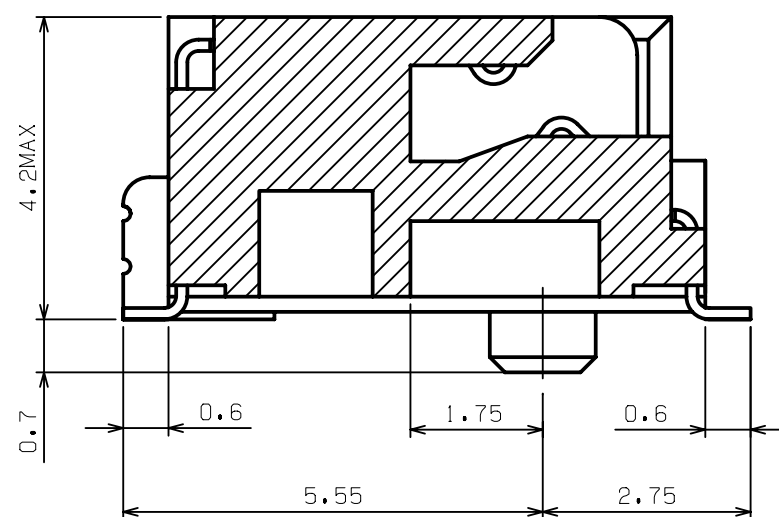
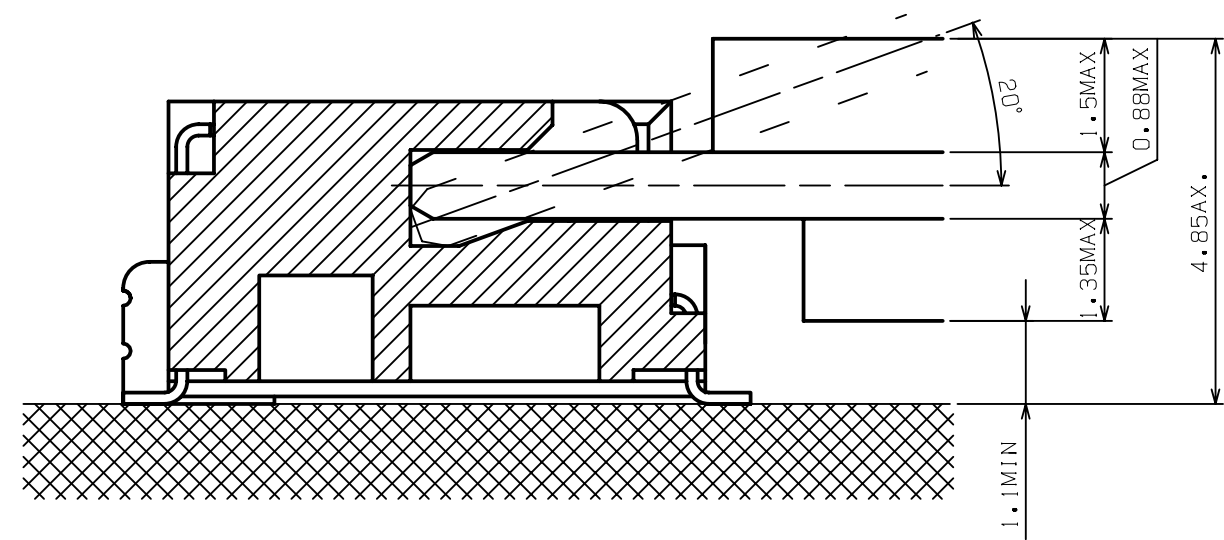
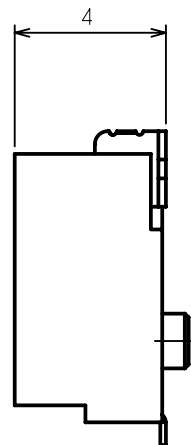
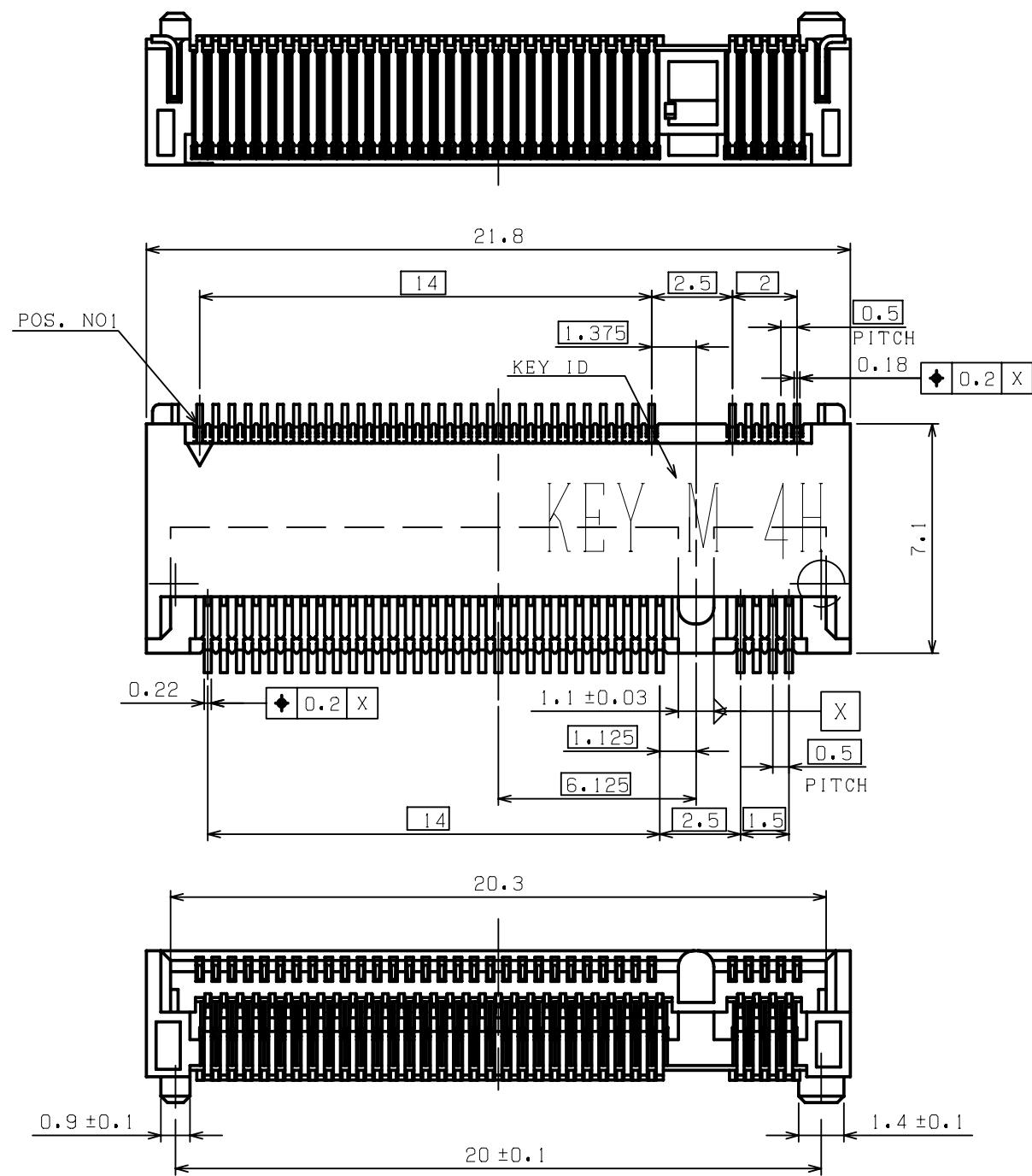
4

3

2

1

REV.	DESCRIPTION	DATE	DWG.	CHKD
0	PROPOSED	13/10/24	B.K	T.H



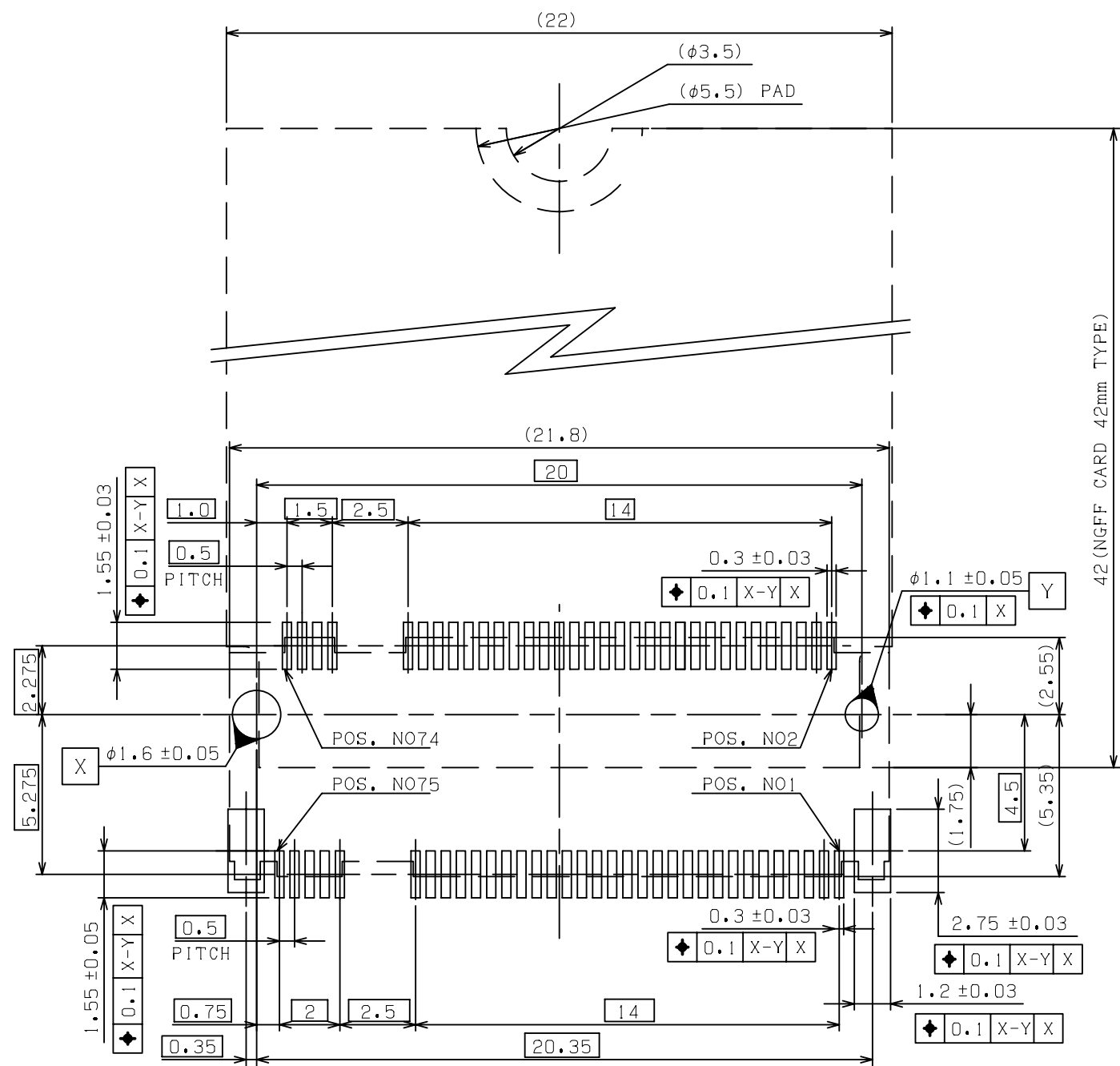
- NOTES:
- MATERIAL:  
HOUSING: HIGH TEMPERATURE THERMO PLASTIC UL94V-0  
TERMINAL: COPPER ALLOY  
SOLDER PEG: COPPER ALLOY
  - FINISH:  
TERMINAL:  
CONTACT AREA: SEE CHARTS  
SOLDERING AREA: SEE CHARTS  
UNDER PL.: NICKEL PL. 50 μm THK MIN.
  - THIS PRODUCT DOESN'T CONTAIN ENVIRONMENTAL HAZARDOUS PER DIRECTIVE 2002/95/EC FOR RoHS COMPLIANT.

KEY M	Au: 30μm	CA1019-067B03
	Au: 15μm	CA1019-067B02
KEY ID	GOLD FLASH	CA1019-067B01
	FINISH	PART NO.

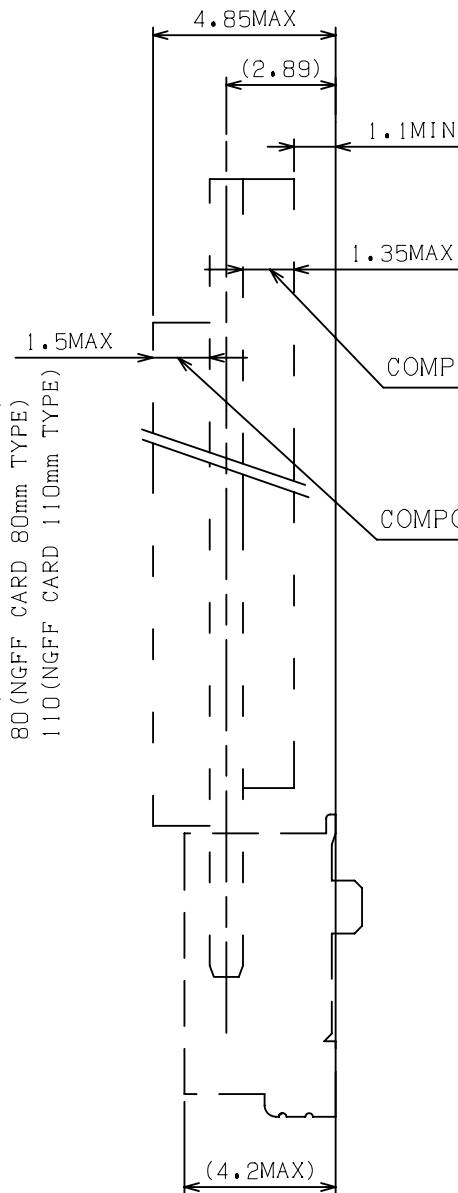
FINISH		NAME		PART NO.	
MATERIAL	NET WEIGHT	COLOR	GENERAL TOLERANCE	UNIT:mm	
*****	***g	BLACK	±0.2 ±3°	UNIT:mm	
FIN.&TREAT	GROSS WEIGHT	SCALE	SIZE		
*****	***g	5:1	A3		
CUSTOMER	PART NO.	CA1019-067B**		REV.	0
CUSTOMER PART NO.	PROPOSAL NO.	****-***-**-**		REV.	*
*****		*****-***-**-**		(SHEET 1 OF 4)	
美星鴻科技股份有限公司 MSH TECHNOLOGY INC.		M.2 CONNECTOR KEY ID "M"			
APP. 13/10/24	CHKD 13/10/24	DWG. 13/10/24	0.5mm PITCH 4H ASSY		
T.HASHIMOTO	T.HASHIMOTO	B.KA			

(CUSTOMER DRAWING)

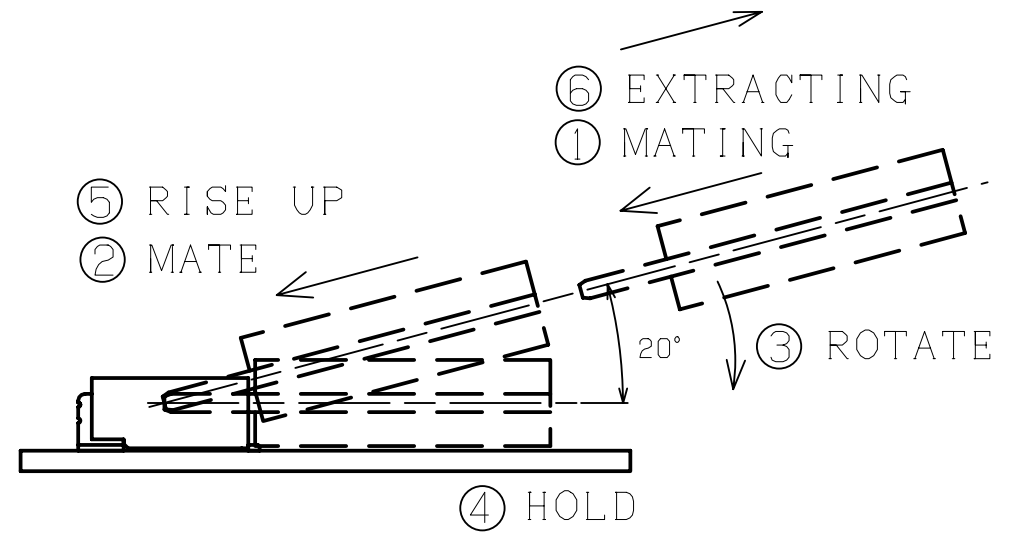
REV.	DESCRIPTION	DATE	DWG.	CHKD
	SEE SHEET 1 OF 4			



KEY ID "M"  
RECOMMENDED P.C. BOARD LAYOUT

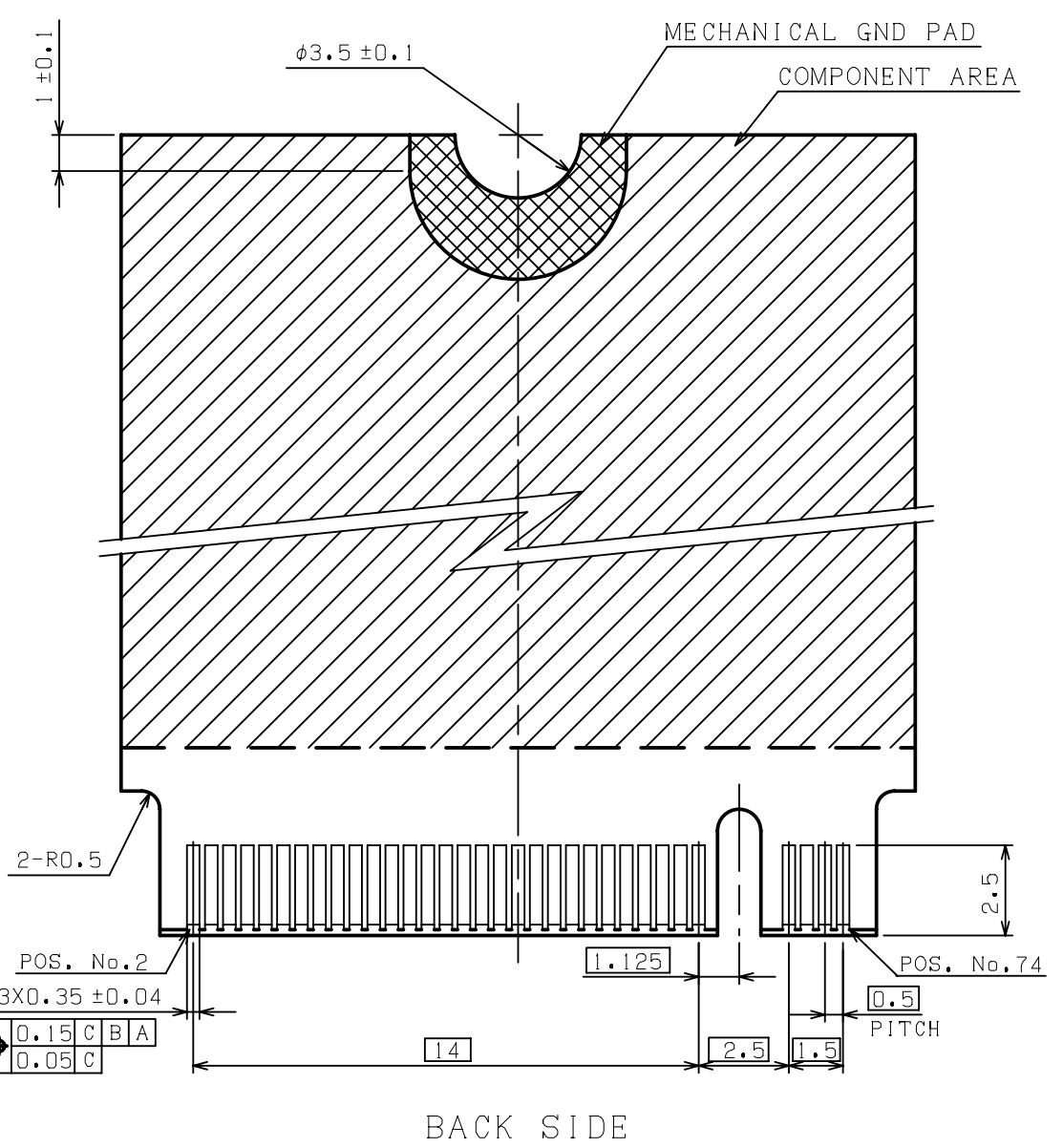
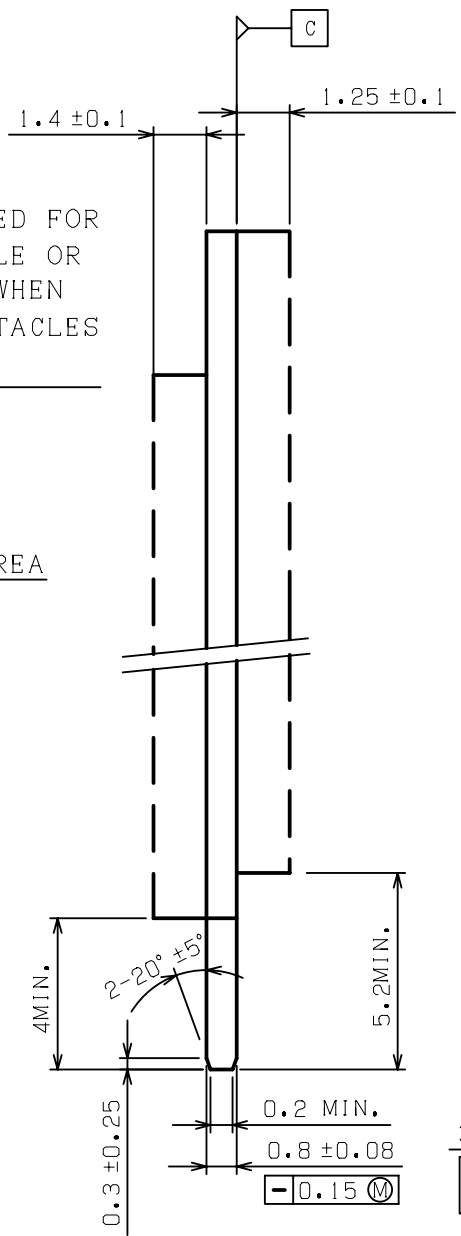
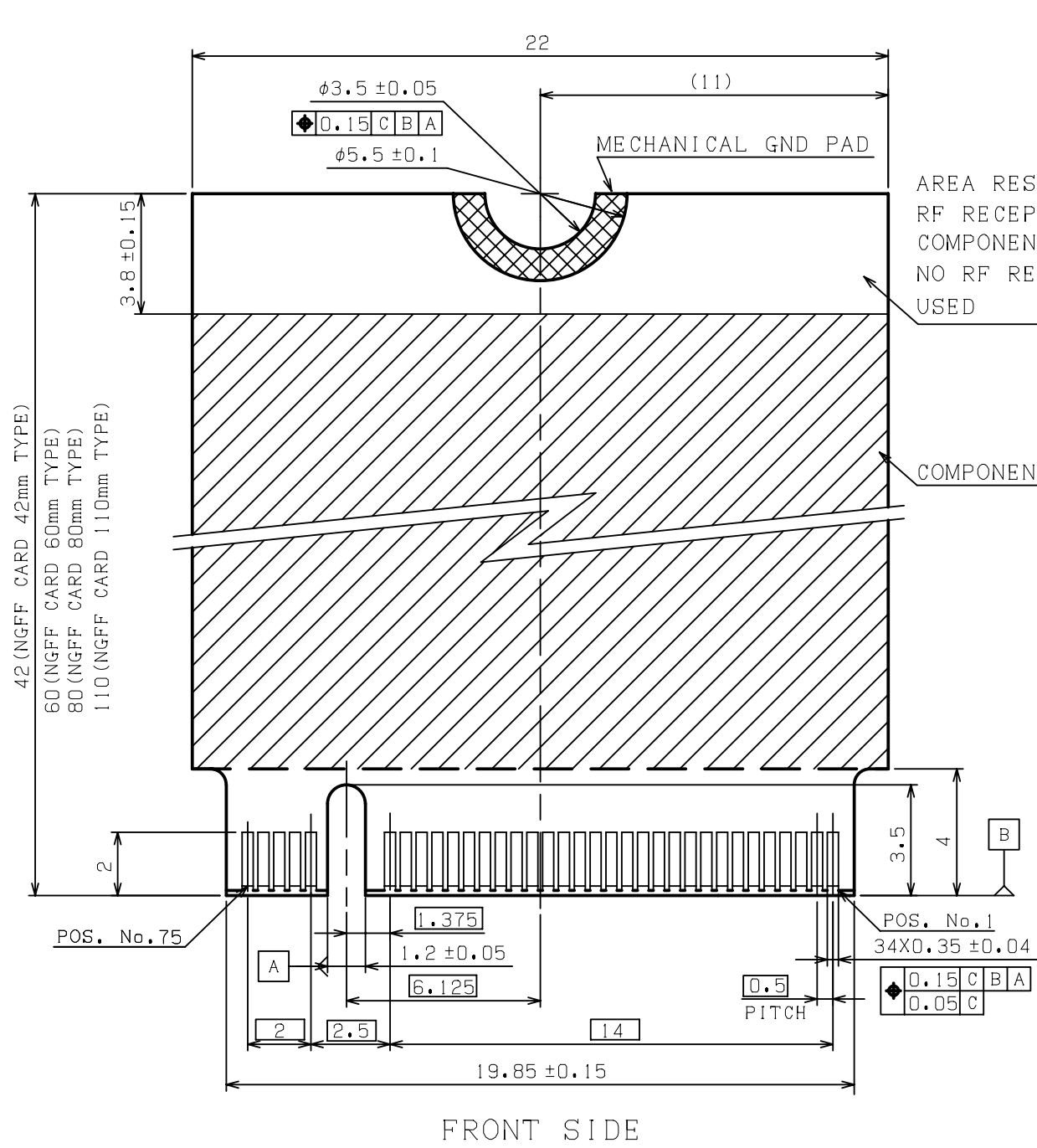


COMPONENT HEIGHT (BACK SIDE)  
COMPONENT HEIGHT (FRONT SIDE)



FINISH		NAME		PART NO.	
MATERIAL	*****	NET WEIGHT	***g	COLOR	BLACK
FIN. & TREAT	*****	GROSS WEIGHT	***g	SCALE	5:1
CUSTOMER	*****	CUSTOMER PART NO.	*****	GENERAL TOLERANCE	±0.2 ±3°
				SIZE	A3
				UNIT:mm	
				PART NO.	CA1019-067B**
				PROPOSAL NO.	****-***-**-**
				NAME	M.2 CONNECTOR KEY ID "M"
					0.5mm PITCH 4H ASSY
APP.	13/10/24	CHKD	13/10/24	DWG.	13/10/24
					T.HASHIMOTO B.KA

REV.	DESCRIPTION	DATE	DWG.	CHKD
SEE SHEET 1 OF 4				



KEY ID "M"  
RECOMMENDED MODULE LAYOUT

GENERAL TOLERANCE ±0.15

FINISH		NAME		PART NO.	
MATERIAL	*****	NET WEIGHT	***g	COLOR	BLACK
FIN. & TREAT	*****	GROSS WEIGHT	***g	SCALE	5:1
CUSTOMER	*****	GENERAL TOLERANCE	±0.2 ±3°	SIZE	A3
CUSTOMER PART NO.	*****	PART NO.	CA1019-067B**	UNIT:mm	
	*****	PROPOSAL NO.	****-***-**-**	REV.	0
美星鴻科技股份有限公司 MSH TECHNOLOGY INC.				NAME M.2 CONNECTOR KEY ID "M"	
APP.	13/10/24	CHKD.	13/10/24	DWG.	13/10/24
T.HASHIMOTO	T.HASHIMOTO	B.KA	0.5mm PITCH 4H ASSY		

(CUSTOMER DRAWING)

6

5

4

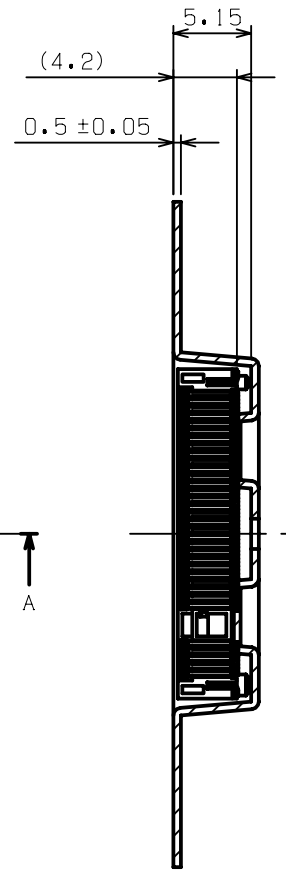
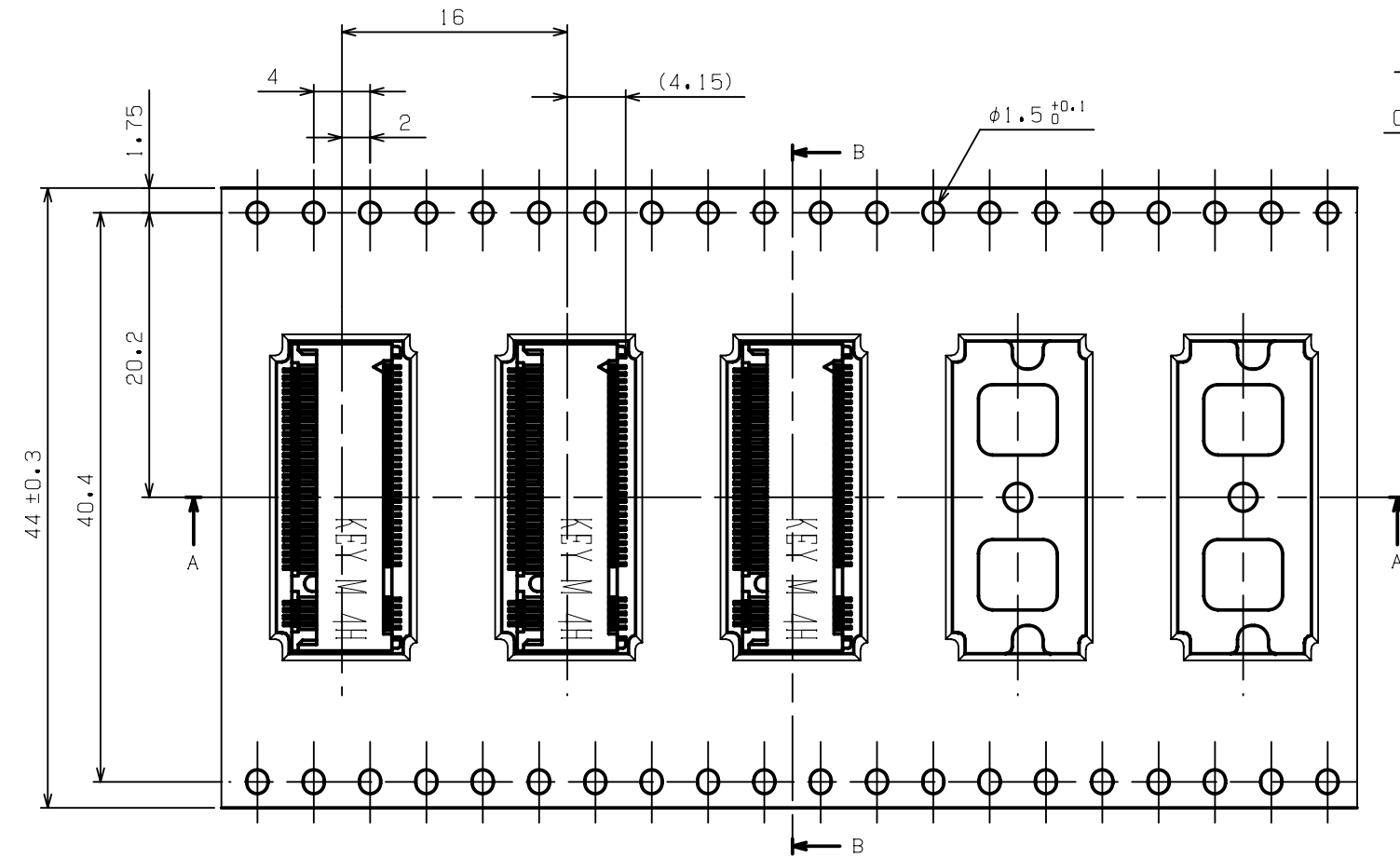
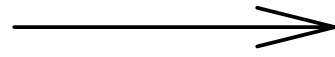
3

2

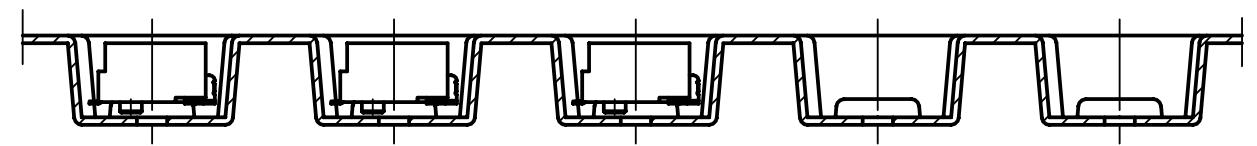
1

REV.	DESCRIPTION	DATE	DWG.	CHKD
	SEE SHEET 1 OF 4			

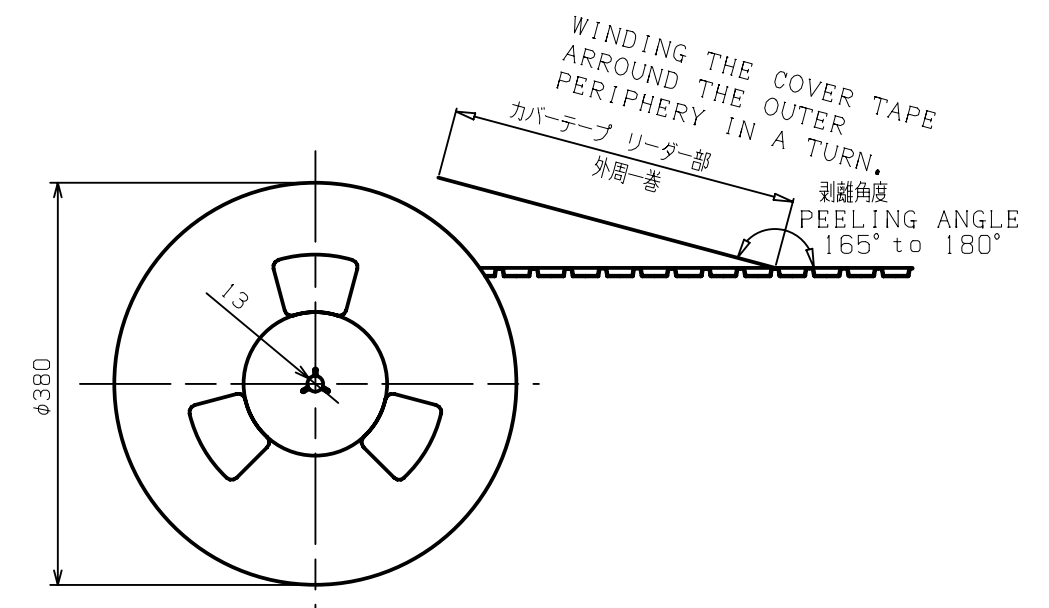
DIRECTION OFF TOP OF REEL



SECT B-B



SECT A-A



NOTES:

1. THE DIRECTION OF EACH CONNECTOR ON A EMBOSS IS REFERED TO THIS DRAWING.
2. GENERAL TOLERANCE : ±0.5 , ±3°
3. PACKAGED IN EMBOSS TAPE AND PLASTIC REEL 1000 PCS PRE REEL.

FINISH		NAME		PART NO.	
MATERIAL	NET WEIGHT	COLOR	GENERAL TOLERANCE	UNIT:mm	
*****	***g	BLACK	±0.2 ±3°		
FIN.&TREAT	GROSS WEIGHT	SCALE	SIZE		
*****	***g	5:1	A3		
CUSTOMER			PART NO.	REV.	
*****			CA1019-067B**	0	
CUSTOMER PART NO.			PROPOSAL NO.	REV.	
*****			****-***-**-**	*	
美星鴻科技股份有限公司 MSH TECHNOLOGY INC.			NAME (SHEET 4 OF 4)		
			M.2 CONNECTOR KEY ID "M"		
APP. 13/10/24	CHKD 13/10/24	DWG. 13/10/24	0.5mm PITCH 4H ASSY		
T.HASHIMOTO	T.HASHIMOTO	B.KA			